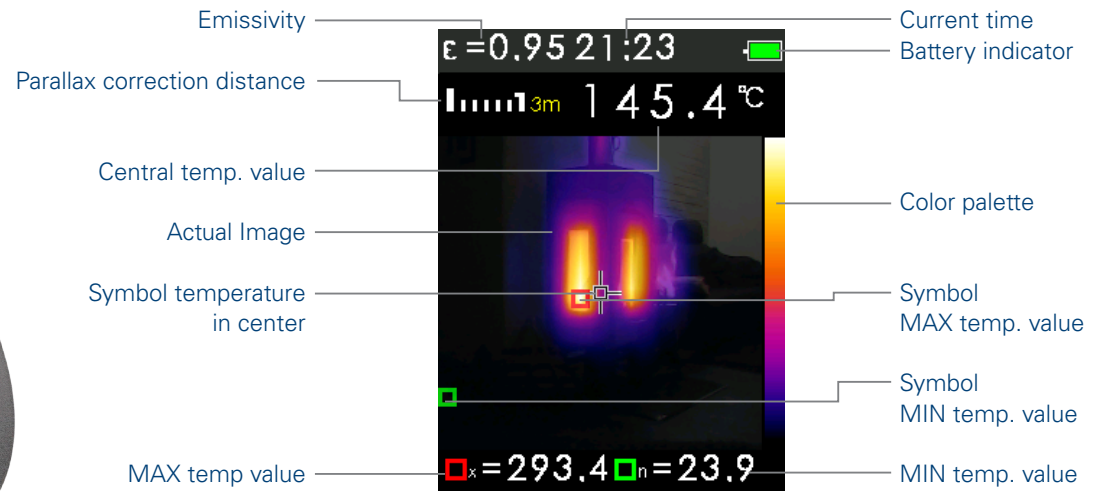


# FTI 300

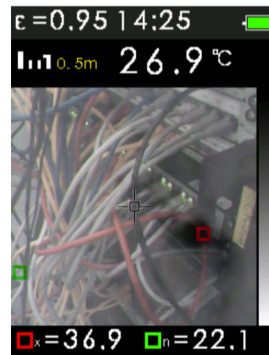
## Thermal imaging camera

» Thermal imaging camera for non contact measurement of surface temperature.

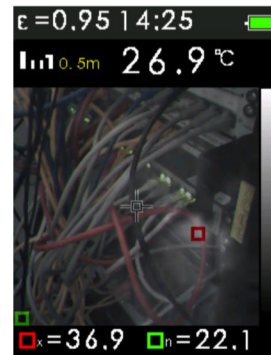
» **Trades and tasks:** Heating and ventilating installations, building insulation (heat loss), plumbing, electric, electronic, electro-mechanical and mechanical engineering, routine maintenance  
Easy to locate hot and cold spots on electrical and mechanical installations.



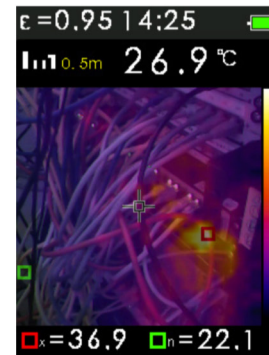
FEATURES	SUPPLIED WITH FTI 300
<ul style="list-style-type: none"> <li>· Automatic indication of hot / cold spot with configurable alarm function</li> <li>· PIP-function for blending of visible and infrared image (0-100%) for optimized orientation in the picture</li> <li>· 6 colour palettes</li> <li>· Memory for 6000 images / data transfer to PC for subsequent analysis</li> </ul>	<p style="background-color: #003366; color: white; padding: 2px;">ART.-NO. 800040</p> <ul style="list-style-type: none"> <li>· Li-Ion battery &amp; charger</li> <li>· USB-cable for data transfer and charging</li> <li>· Hard case</li> </ul>



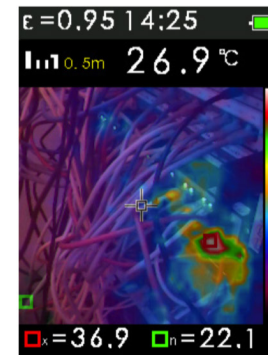
» grey (black)



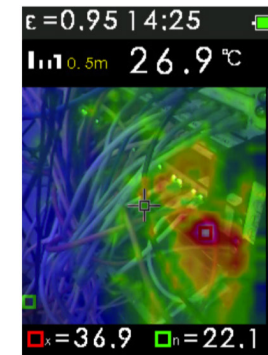
» grey (white)



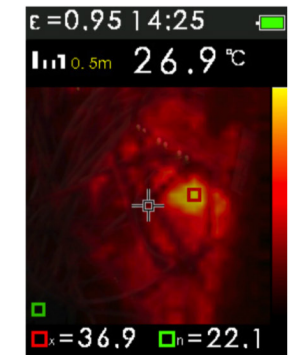
» Metal



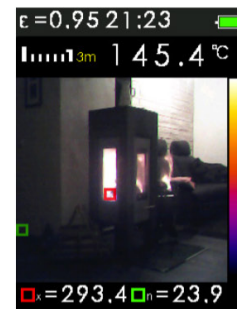
» Rainbow



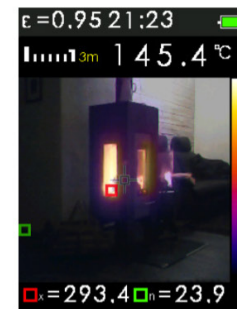
» High Contrast



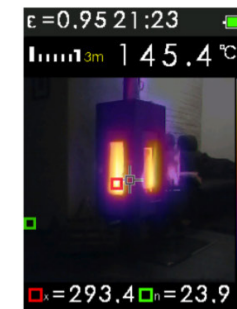
» Hot Metal



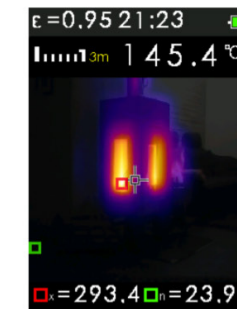
» 0%



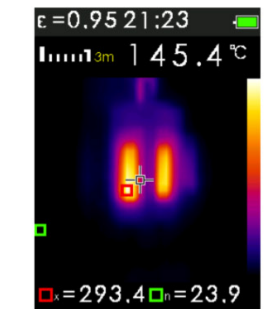
» 25%



» 50%



» 75%



» 100%

TECHNICAL DATA		TECHNICAL DATA	
FTI 300		FTI 300	
<b>Thermal imaging</b>		<b>Memory / Data transfer</b>	
IR sensor resolution	32 x 31 pixel	Memory	MicroSD card 8 GB
Thermal sensitivity	<0,15°C (150 mK)	File format / memory size	.bmp / 6000 pictures
Field of view (FOV)	40° x 40°	PC interface	USB 2.0
Focusing	Fixed	<b>Other</b>	
Colour palet tes	6 - greyscale (white hot), greyscale (black hot), iron-bow, rainbow, rainbow (high contrast), hot metal	Power supply	3.7 V Li-Ion battery
Display	2.2" TFT colour LCD, 320 x 240 pixel	Menu languages	EN, DE, FR, ES, IT
PIP (Blending fusion)	IR image with visible image in 6 steps (0 – 100%)	Weight	410 g
<b>Infrared temperature measurement</b>		Dimensions	205 x 155 x 62 mm
Temperature range	-20°C - +300°C		
Accuracy (at 25°C)	± 2% from reading or ± 2°C		
Measurement cursors	3 (centre, max, min)		